

QUALITY OF DATA

What data should be accessible to who and when?

Ron Dekker | CESSDA

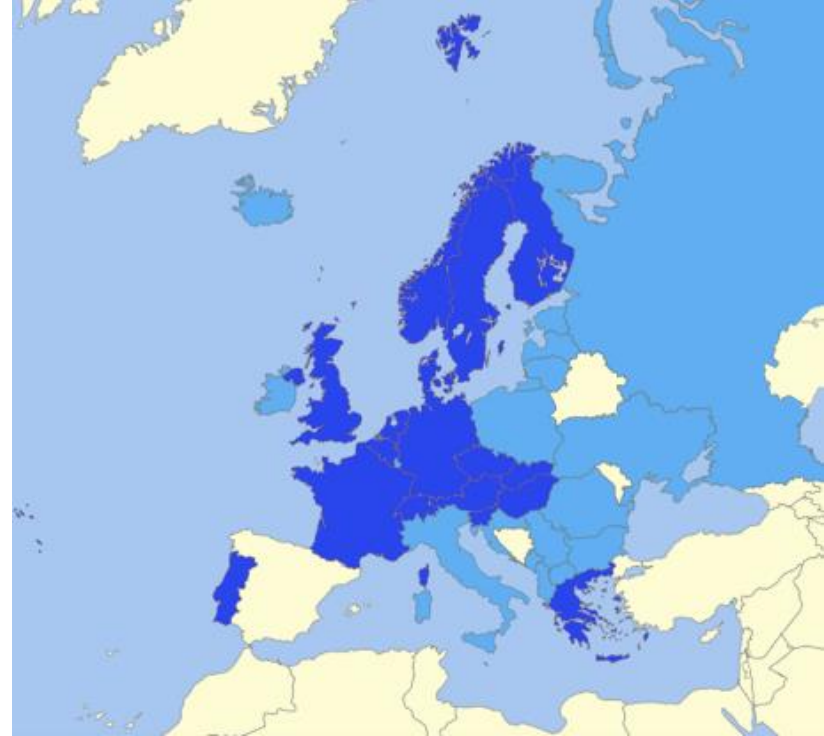
Contents

- ◆ CESSDA
- ◆ SSH Data
- ◆ Key Issues
 - ◆ Quality of Data
 - ◆ Sensitive Data
- ◆ TRUST

CESSDA

◆ Consortium of Social Science Data Archives

- ◆ Provide a distributed & sustainable research infrastructure
- ◆ Facilitate teaching and learning in the social sciences



SSH Data

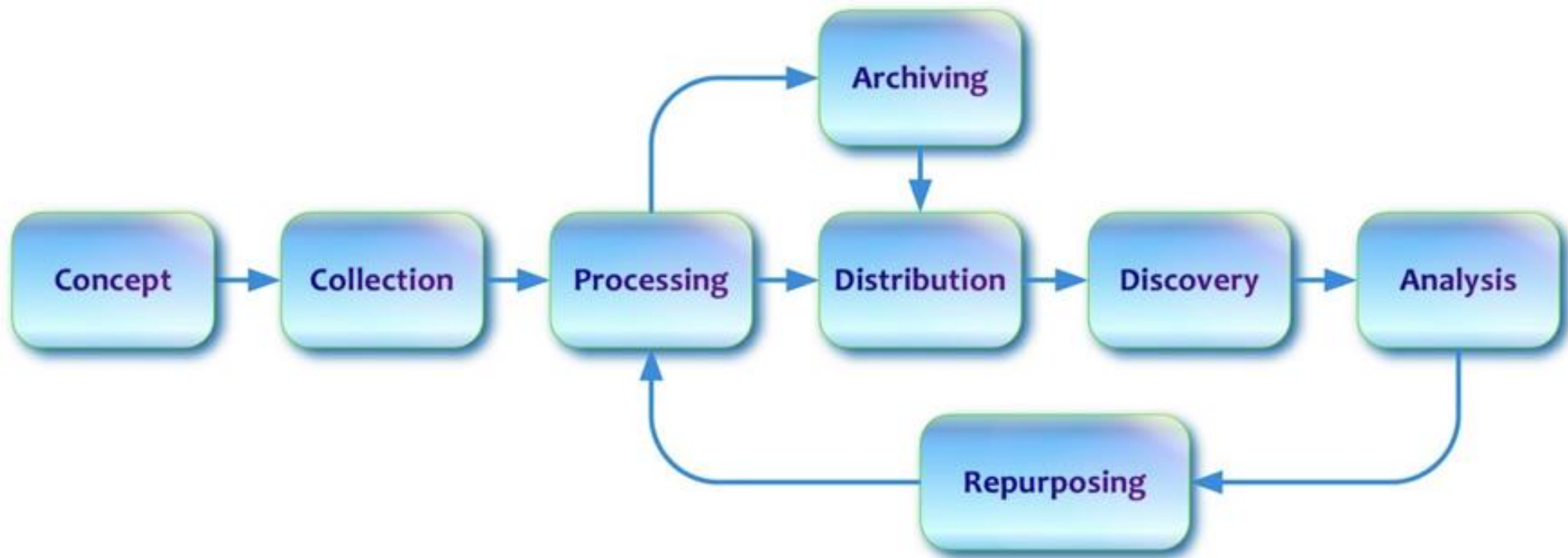
- ◆ Individuals, Organisations, Micro-Macro,
- ◆ One-time, Longitudinal, Panel, Multi-Level, Multilingual
- ◆ Surveys, Registries, Interviews, Videos, Games & Labs
- ◆ Concepts - Questions - Variables & Values
- ◆ Data Clusters / Thematic Data
- ◆ Combine with Geo, Life, ...



source: <https://www.videoblocks.com>

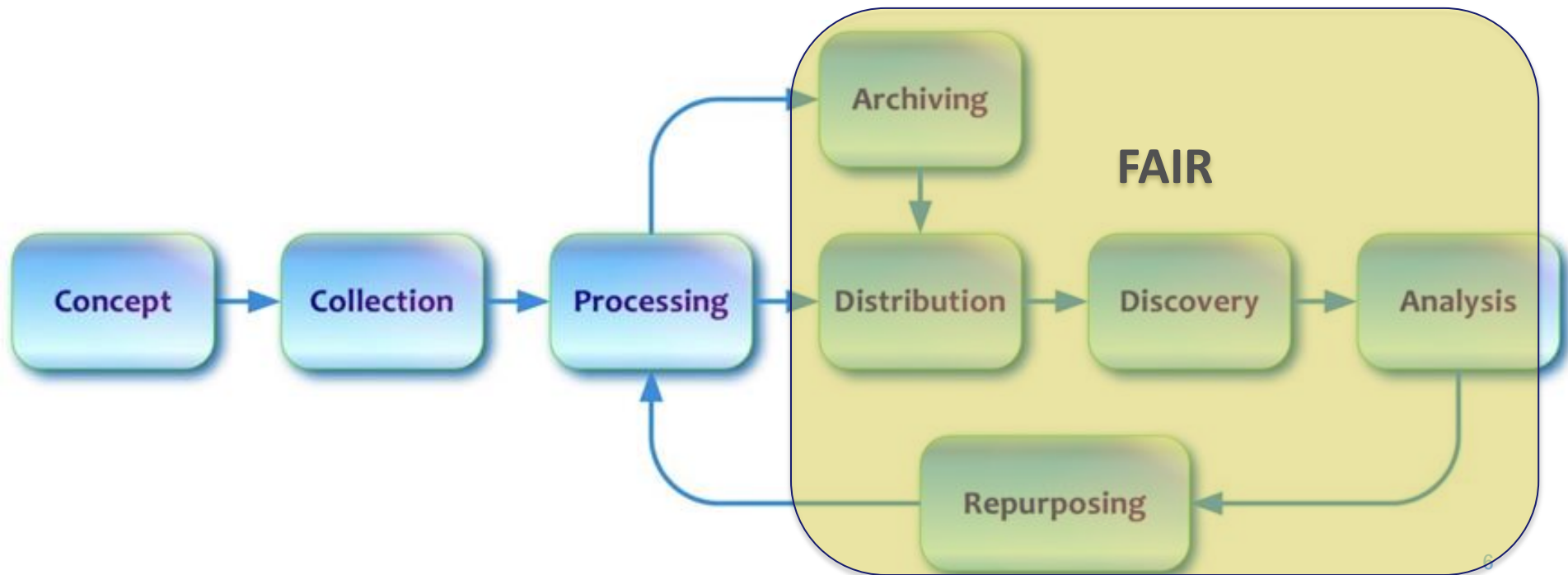
Quality of Data

◇ FAIR



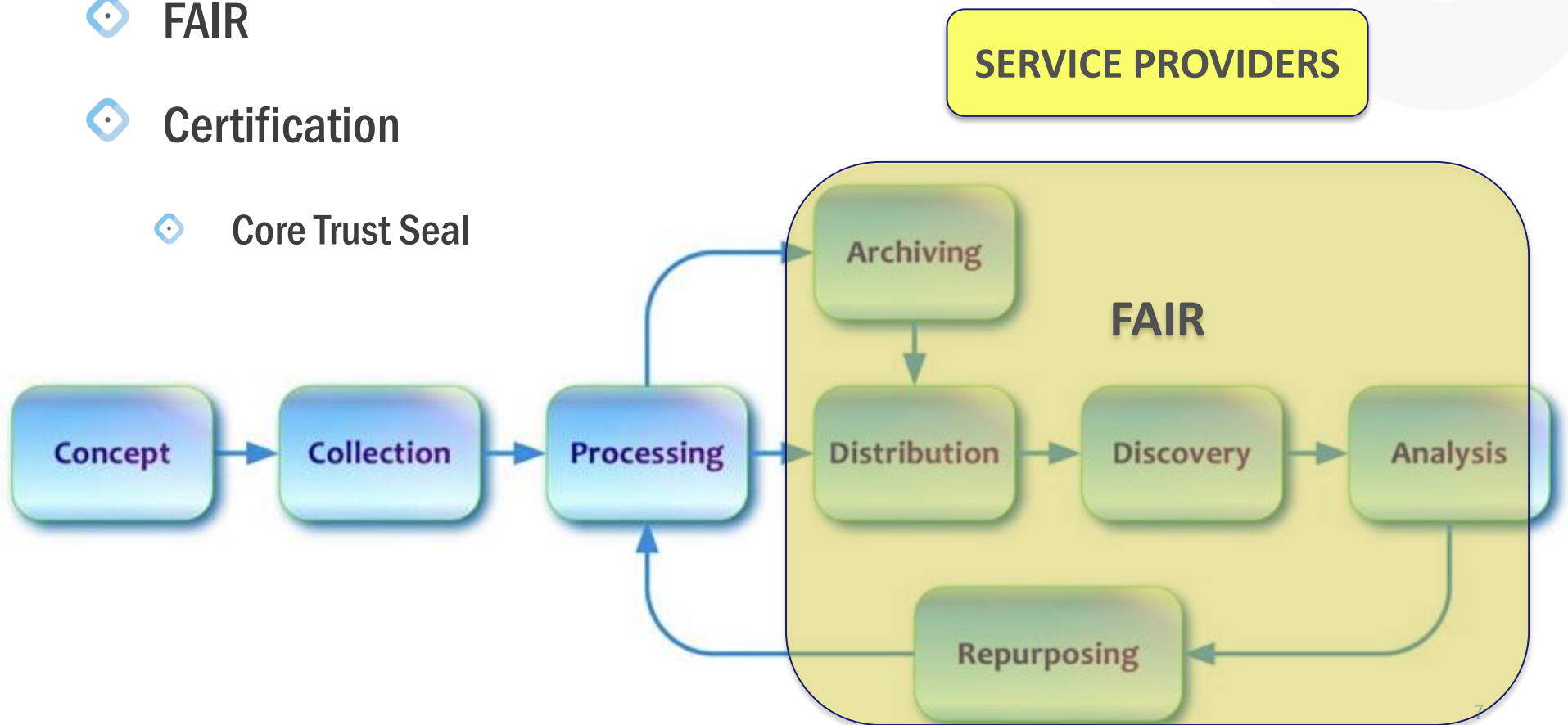
Quality of Data

◇ FAIR



Quality of Data

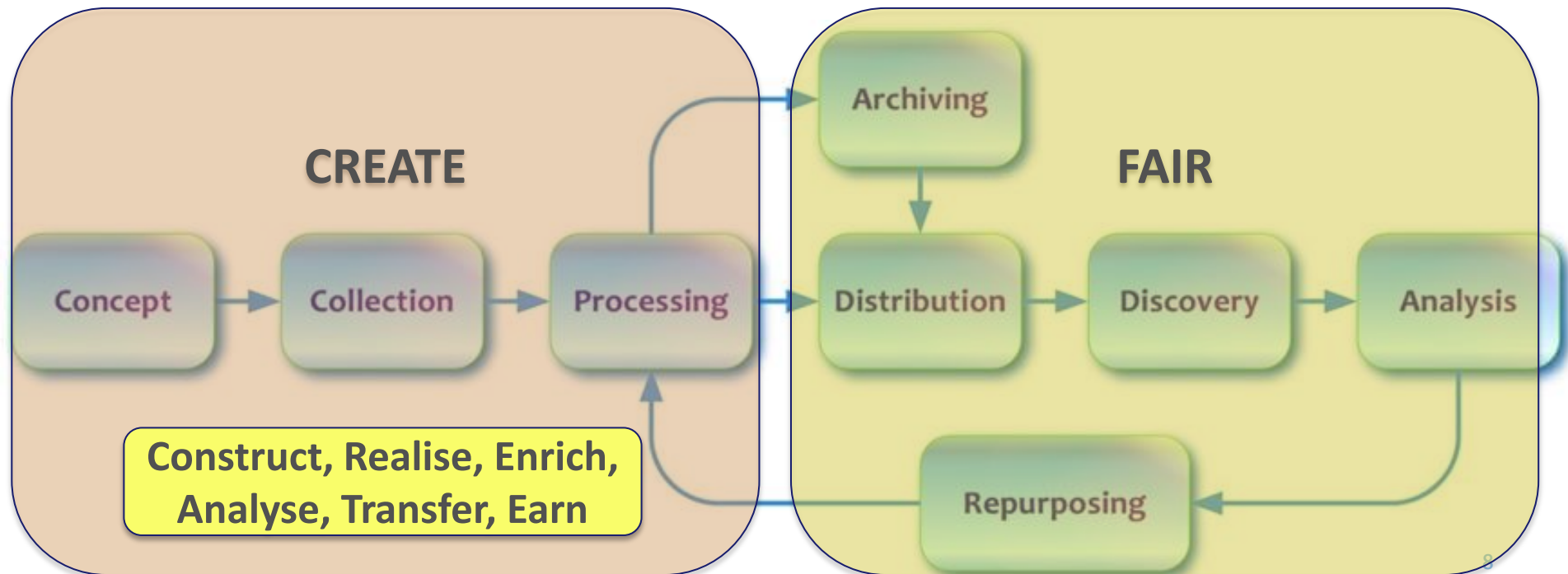
- ◆ FAIR
- ◆ Certification
- ◆ Core Trust Seal



Quality of Data

◇ FAIR

◇ but also during CREATION process



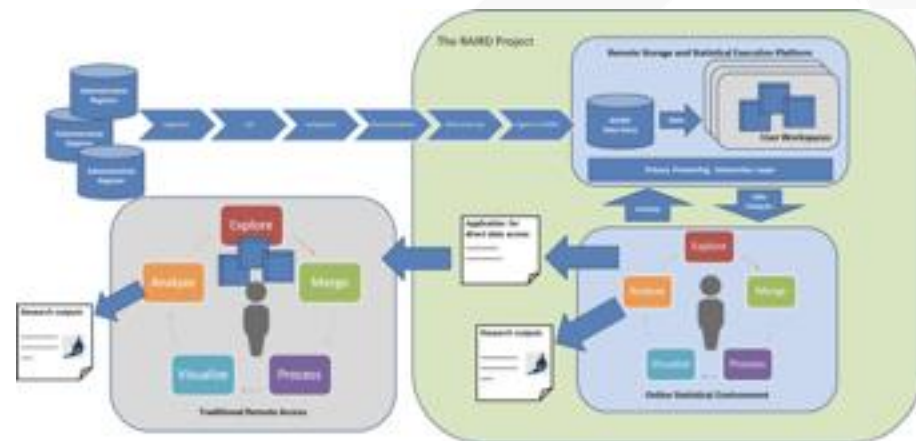
Sensitive Data

- ◆ **Ownership**
 - ◆ Keep control on Who & How, Licensing
- ◆ **Ensure Security**
 - ◆ Authentication & Authorisation
 - ◆ Levels of Access i.s.o. Open or Closed
- ◆ **Platform**
 - ◆ Data stay where they are
 - ◆ Remote access

Ownership

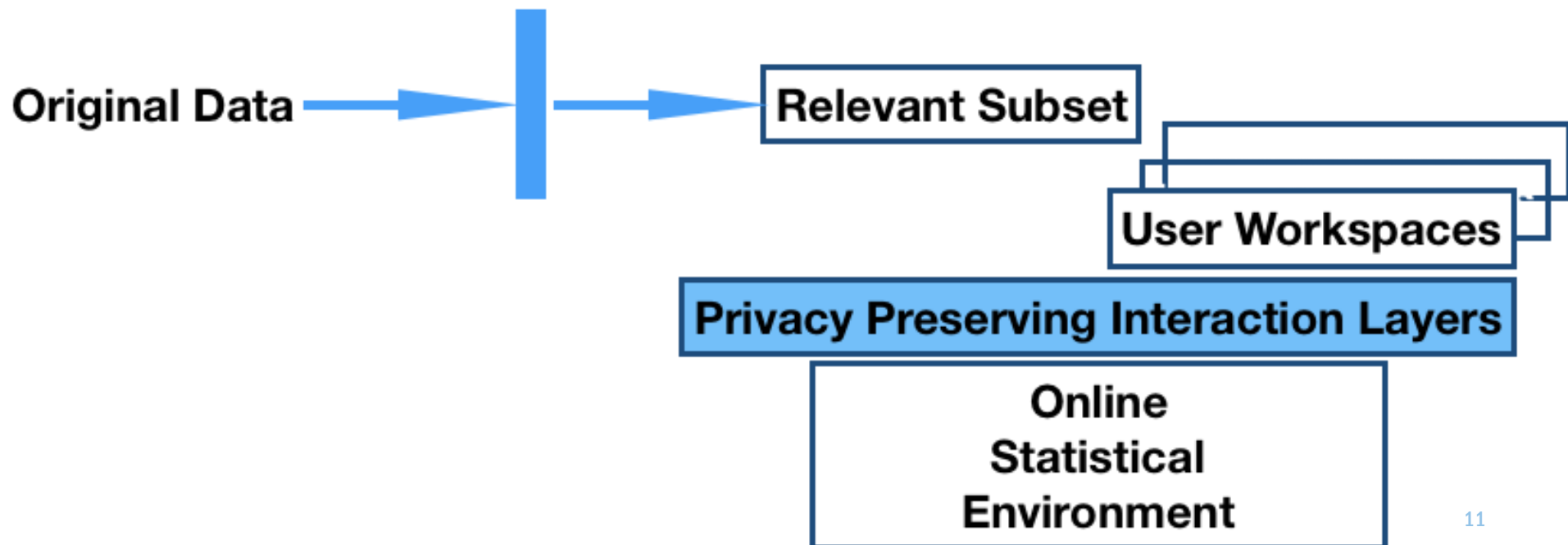
- ◆ In order to provide clarity on ownership of the research data:
Unless explicitly specified otherwise, legal ownership should be assigned to ...
 - A. The principle researcher
 - B. The university/institute
 - C. The university, but the it must assign a data steward for each data set and specify the mandate of the data steward

Remote Access



❖ Pilots & Projects

- ❖ NORWAY: Remote Access Infrastructure for Register Data
- ❖ GERMANY: European Remote Access Network



Platforms

Repositories

Access Levels

Data Producers

- ✱ *Design, Sampling, Collection*
- ✱ Data Curation
 - ✱ Data Management
 - ✱ (Self) Deposit of Data
 - ✱ Secured Storage
- ✱ Training

Single Sign On

Service Providers

- ✱ Components
- ✱ Tools & Services

Platform Owner

- ✱ Rules
- ✱ Architecture

Licenses

Access i.s.o. Downloads

Data Users

- ✱ FAIR
 - ✱ Find relevant Data
 - ✱ Access data easily
 - ✱ Interoperability
 - ✱ Re-use, incl. secure
- ✱ Training

TRUST

- ◆ Platforms
 - ◆ Transparency on rules, Sustainability
- ◆ Producers
 - ◆ Quality of Data, Remain in Control
- ◆ Proper use – sharing i.s.o. owning
 - ◆ Licenses, Code of Conduct, Authentication
- ◆ Intermediates (Service Providers)
 - ◆ Sustainability, Quality

Thank you

